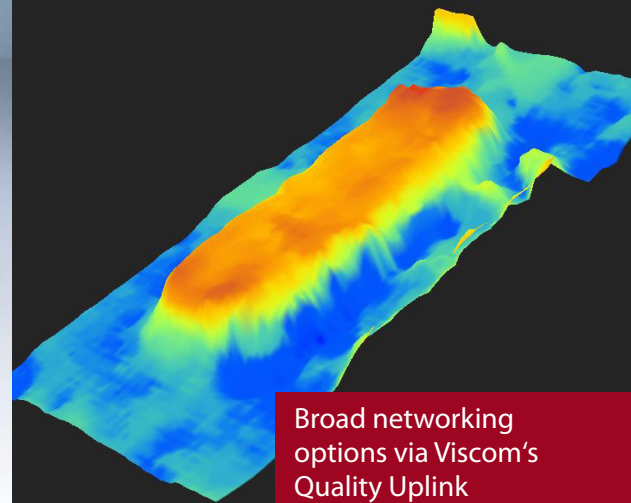




High-End SPI System for In-Line Manufacturing



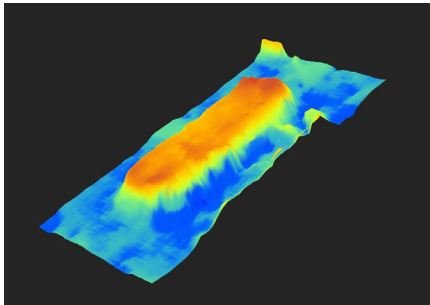
Broad networking
options via Viscom's
Quality Uplink

iS6059 SPI

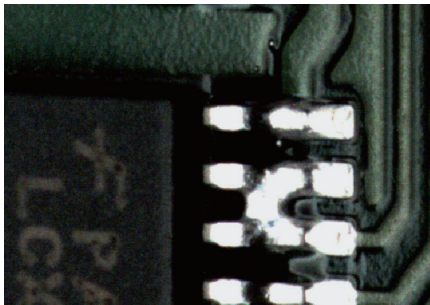
Excellent technology for solder
and sinter paste inspection

3D SPI

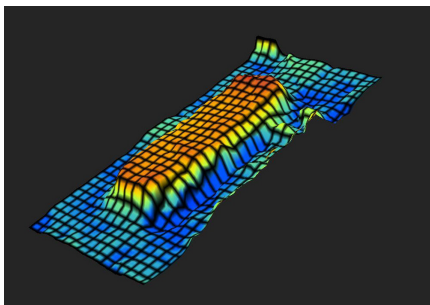
High-Throughput Paste Inspection with Maximum Accuracy



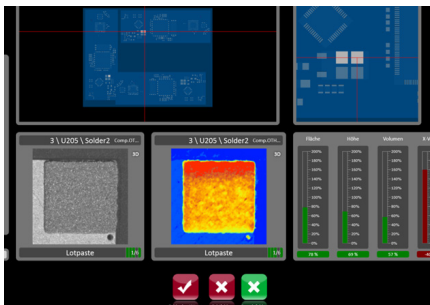
Color-assisted 3D solder paste volume calculation



Paste bridge after soldering



3D solder paste volume calculation with grid pattern



User-friendly overviews in vVision

Extremely high throughput due to FastFlow handling

Enhanced quality and speed of inspection

Four angled views for shadow-free inspection images

High reproducibility

Very easy operation: color images for verification and efficient program generation

Customer hotline and website, remote maintenance

The iS6059 SPI is a 3D SPI system that offers unbeatable advantages for economical SMT production. Key features include an inspection speed of 90 cm²/s and a field of view size of 58 mm by 58 mm. The orthogonal optical resolution is 12 μm and is combined with four angled views to deliver perfect, shadow-free inspection results – which are key for very small inspection areas. Viscom's optional FastFlow handling offers extremely high throughput rates. Assemblies are synchronously infed and outfed at high speed.

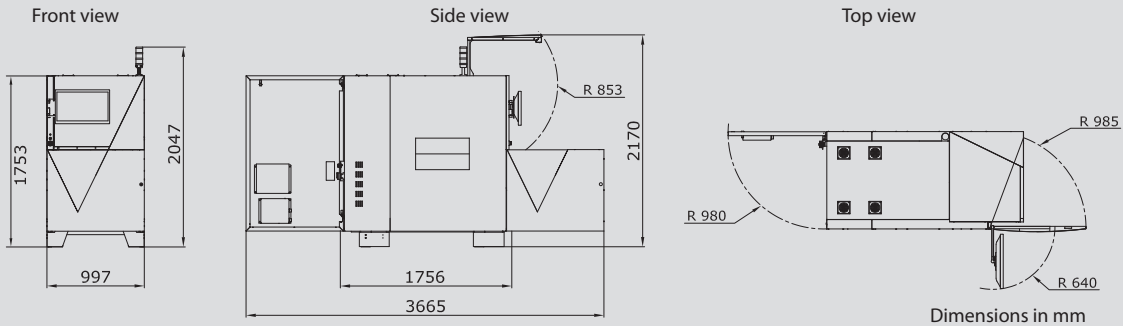
This system, configured to meet optimum cost/benefit aspects, is based on the unique and proven XM camera technology from Viscom and combines precise defect detection with the highest inspection speed. The iS6059 SPI inspects all quality criteria for solder paste deposits, including volume, shape, surface, height, offset, paste bridges and paste smearing.

Evaluating the 3D measurement data and linking the results via Quality Uplink with the paste printer, placement system, AOI and AXI allows for effective process control and sustainable quality improvement. In this way, Viscom's 3D SPI system delivers indications of process weaknesses that can be automatically adapted, e.g. adjusting the screen cleaning cycles or correcting print displacement or placement offset.

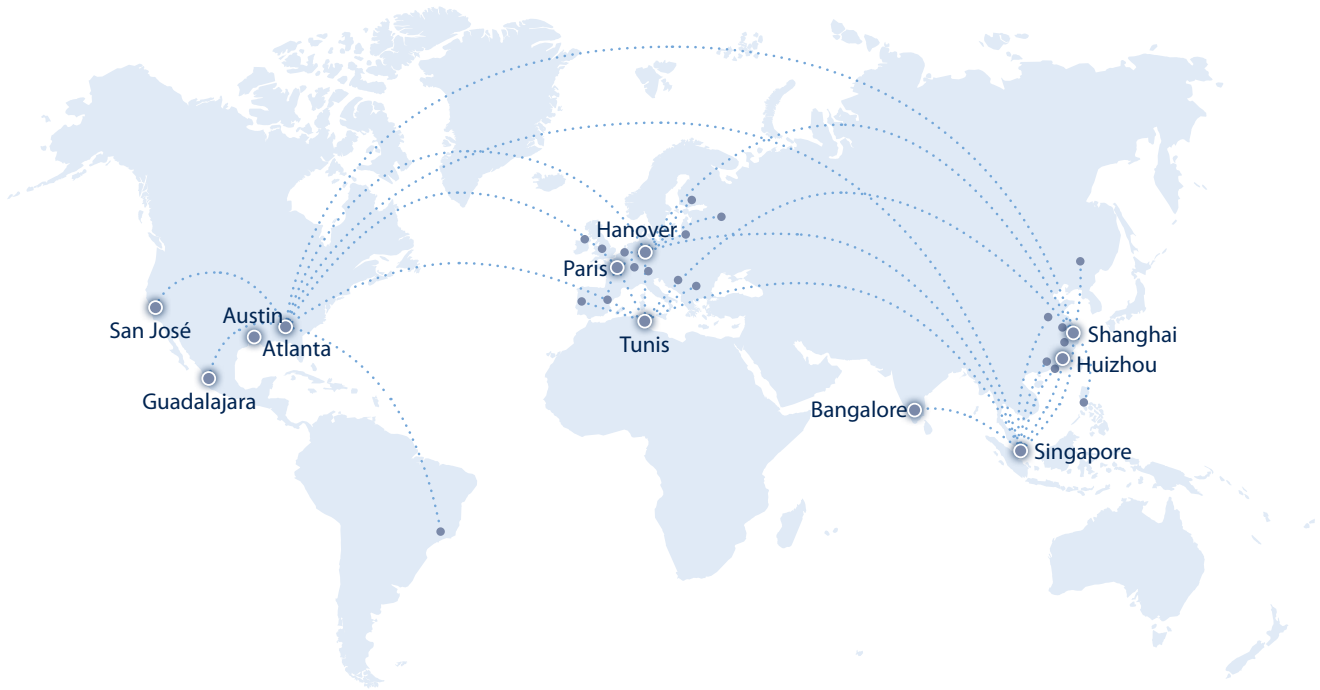


Technical Specifications

iS6059 SPI



		iS6059 SPI
Inspection scope		Solder paste deposits (stencil printing or dispensing technology, up to pad sizes for 01005 components); sinter paste, adhesives, surface, height, print displacement, smearing, shape, coplanarity, open area analysis, OCR, DMC
Camera technology		XM-SPI-II
	3D sensor technology	
	Z-resolution	0.1 μ m
	Z-range	Up to 5 mm (0.2")
	Angled view cameras	
	Number of megapixel cameras	4
Orthogonal camera		
	Resolution	12 μ m
	Field of view	58 mm x 58 mm (2.3" x 2.3")
Inspection speed		Up to 90 cm ² /s
Software	User interface	Viscom vVision/SI EasyPro
	Statistical process control	Viscom vSPC/SPC, open interface (optional)
	Verification station	Viscom vVerify/HARAN
	Remote diagnosis	Viscom SRC (optional)
	Programming station	Viscom PST34 (optional)
System computer	Operating system	Windows®
	Processor	Intel®Core™i7
PCB handling	PCB dimensions	508 mm x 508 mm (20" x 20"); long-board option available
	PCB support	Optional
	Transport height	850 - 950 mm \pm 20 mm (33.5" - 37.4" \pm 0.8")
	Width adjustment	Automatic
	Transport concept	Single-track transport system; dual-lane option available
	PCB clamping	Pneumatic
	Upper transport clearance	50 mm (2")
	Lower transport clearance	50 mm (2")
Other system data	Positioning unit	Synchronous linear motor
	Interfaces	SMEMA, Hermes, CFX, third-party providers
	Power requirements	210 V, 60 Hz, 3P/PE +/- 10%; 4 - 6 bar working pressure
	System dimensions	997 mm x 1756 mm x 1753 mm (39.3" x 69.1" x 69") (W x D x H)
	Weight	Approx. 1060 kg (2337 lbs)



Headquarters:

Viscom AG
Carl-Buderus-Str. 9–15
30455 Hanover
Germany
Phone: +49 511 94996-0
Email: info@viscom.de

Europe

Viscom France S.A.R.L.
6, rue Saint Simon
Zone du Vert Galant
95310 Saint-Ouen l'Aumône
France
Phone: +33 134 641616
Email: info@viscom.fr

Africa

Viscom Tunisie S.A.R.L.
Rahma Building; App B5,
Block B, 2nd floor
Lac Houran Street – Berges
du Lac
1053 Tunis, Tunisia
Phone: +216 71960584
Email: info@viscom.fr

www.viscom.com



Americas

Viscom Inc.
1775 Breckinridge Parkway
Suite 500, Duluth (Atlanta)
GA 30096, USA
Phone: +1 678 966-9835
Email: info@viscomusa.com

Viscom Inc.
898 B Faulstich Court
San José, CA 95112, USA
Phone: +1 818 4160514
Email: info@viscomusa.com

Viscom Inc.
9600 Great Hills Trail Suite 150
W, Unit# 144
Austin, TX 78759, USA
Phone: +1 737 280-5759
Email: info@viscomusa.com

Viscom Inc.
Av. Vallarta 6503
Concentro Local F-27
Zapopan (Guadalajara)
JAL. C.P. 45010, Mexico
Phone: +52 333110-1567
Email: info@viscomusa.com

Asia

**Viscom Machine Vision
Pte. Ltd.**
150 Kampong Ampat/
#01-02 KA Centre
368324 Singapore
Singapore
Phone: +65 62859-891
Email: info@viscom.com.sg

**Viscom Machine Vision
Trading Co. Ltd.**
2nd floor, Block D
No. 1010 Kaixuan Road
200052 Shanghai, China
Phone: +86 21 61619368
Email: info@viscom.cn

**VICN Automated Inspection
Technology (Huizhou) Co. Ltd.**
2nd Hechang Road No. 25
Zhongkai High-tech Zone
516006 Huizhou City
Guangdong province, China
Phone: +86 752 2607785
Email: info@viscom.cn

**Viscom Machine Vision
(India) Pvt. Ltd.**
No. 2, Katha, No. 279/283
Hulimangala Village
Jigani Hobli, Anekal Taluk
Bangalore 560105, India
Phone: +91 9481202030
Email: info@viscom.com.sg

Viscom also works with an extensive network of local representatives and distributors in Europe, the Americas, Asia and Africa. Please refer to our website for a list of our representatives and distributors.